

## **Historic, Archive Document**

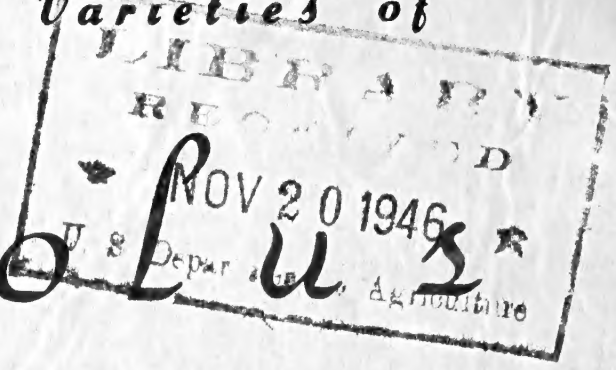
Do not assume content reflects current scientific knowledge, policies, or practices.



62.25

Superior Cut-Flower Varieties of

# Gladiolus



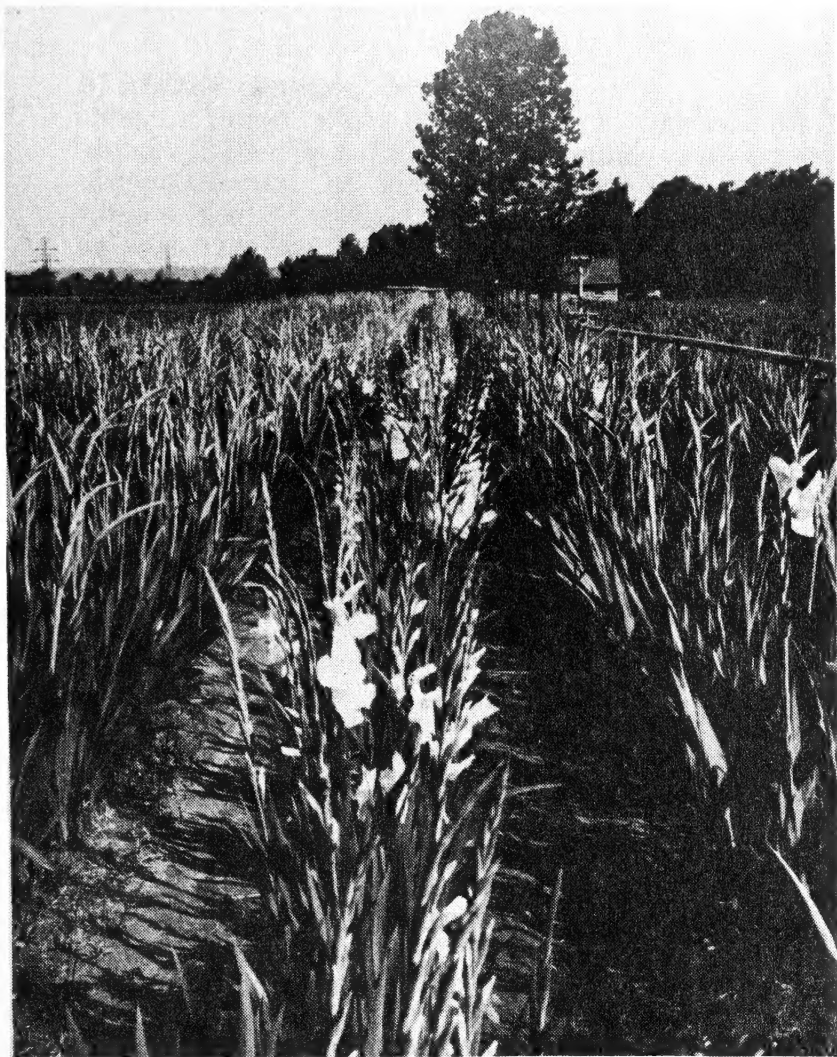
1947  
DESCRIPTIVE  
LIST



Spotlight

**LASCH BULB FARM, INC.  
NEW ALBANY, INDIANA**





*A portion of our early  
cut-flower planting.*

*Photo taken 6-26-46.*

## Foreword -

As you glance through this catalogue, you will readily notice that our listing is small. The reason is that no one grower can grow, and judge, all varieties as there are several hundred in existence. Also there are varieties which we could have listed that have been replaced by new and better kinds. For example, Miss Bloomington, a good yellow in past years, just isn't in the same class as Oregon Gold, Crinklecream, Spotlight, etc. The florist as well as the fancier is demanding the better varieties.

Here in Indiana we usually have long periods of dry weather during late July and August. As a large percentage of our planting is bulblet stock we have installed an automatic irrigation system over our entire planting. It is my opinion that in growing bulblets one will get a more healthy, vigorous bulb if the proper amount of moisture is supplied during the growing season. All bulbs which we offer for sale are grown from bulblets and planting stock. They are young and vigorous and have the ability to produce high quality blooms. All stock was dipped at planting time. Throughout the growing season the foliage was sprayed with DDT and Fermate; DDT to prevent Thrip and Fermate as a control of fungus diseases. Our bulbs are all hand cleaned and stored in galvanized screen bottom trays. Our aim is to send out bulbs of only the highest quality.

# 1947 Introduction

From J. J. Polinsky

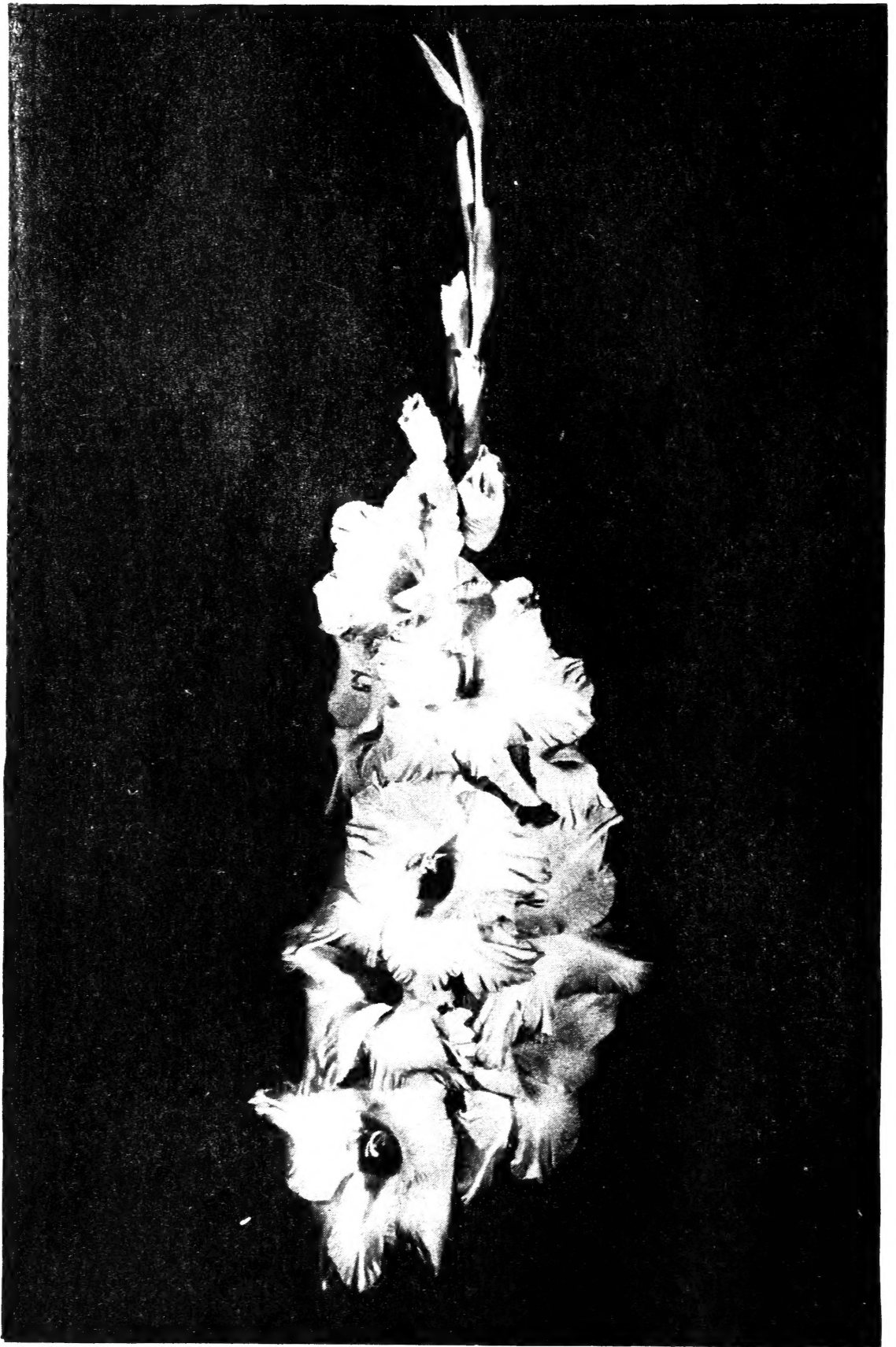
\*\*\*\*\*  
\* Janet Lee \*  
\*\*\*\*\*

( Mr. Polinsky's description ) *Peach on edge of all petals, blending to a deep cream throat, giving the over-all impression of light orange. It is slightly ruffled and has no harsh markings whatever. It will open up to eight five and one-half to six inch florets on a twenty-four inch flower head. The plant grows to a height of fifty-six to fifty-eight inches. Parentage: Picardy x Heidelberg Schloss. I think it has the finest blending of colors found in any glad.*

Priced: Large \$15.00 (no medium or small size bulbs or bulblets available this year.)

**JANET LEE** was the Grand Champion of the Hall of Fame at the 1946 Boston Show of the New England Gladiolus Society.

	Per	Large	Medium	Small	Bulblets	
	3	.25	5-.25	10-.25	Per	
<b>ALADDIN (Palmer) Midseason</b>	10	.75	.50		100	.25
Large salmon pink with a cream throat blotch. Will open 8 huge, beautiful, well placed florets at once. Sometimes this variety will lack height below the flower head and to be at its best it needs good culture. It is a strong husky grower and although an older variety I saw quite a number of prize winning spikes exhibited this year at the shows.						
<b>ALGONQUIN (Palmer) Early Midseason</b>	2	.25	4-.25	8-.25	100	.40
Scarlet, very brilliant and showy. Florets are large, wide open, ruffled, and are well placed on a long flower head. The plant is very tall growing and always makes a straight spike. Opens 8 to 10 and is a fine commercial as well as an exhibition variety.	10	1.00	.50			
<b>ANNAMAE (Pommert) Early</b>	2	.25	3-.25	5-.25	100	.50
A very early variety usually blooming in 70 days. It is chalk white with a tiny wine-red spot deep in the throat. It will open 8 large, plain petaled florets of regular placement on a straight stalk. It was the first to bloom in our planting and brought top prices. It produces jumbo bulblets which germinate readily and is a fine commercial white. Very uniform and dependable.	10	1.00	.60	.40		
<b>BADGER BEAUTY (Kreuger) Midseason</b>	1	.20	.15		10	.20
A beautiful lavender with a creamy white throat. It makes a rangy stem with a long flower head and is a fine florist color. It opens 5 wide open, well attached florets. The demand has always exceeded the supply.	10	1.60	1.20			
<b>BEACON (Palmer) Midseason</b>	3	.20	.15	5-.15	100	.30
Bright rose scarlet with a cream blotch. Will open 8 medium size ruffled blooms on a very tall plant. It makes a striking color combination and is very popular both with the home gardener and the cut-flower producer.	10	.70	.40	.25		
<b>BENGASI (Cave) Midseason</b>	1	5.00	4.00	3.00	10	5.00
Light pink, deepening toward the edge of the petals and blending to a white throat. This glad is reported as being sensational in Canada, where it originated. The florets are very large, wide open and nicely placed on a spike from 18 to 22 buds. It opens 9 with 5 or 6 more showing color on a flower head of 30 inches. Bengasi will bloom from any size bulb and this season the blooms from bulblets in our planting were fine and larger than those grown from bulblets of any other variety. The foliage of the plant is a yellow green. A must-have for every Glad fan.	10	40.00	32.00	24.00		
<b>BLESSED DAMOSEL (Baerman) Midseason</b>	1	.50	.35	.25	20	.25
A light glowing pink. It will open 8 large, round, blooms of heavy texture. The color is wonderful and of a distinctive shade. Classed by many growers as one of the most beautiful pinks grown today. A good propagator.						

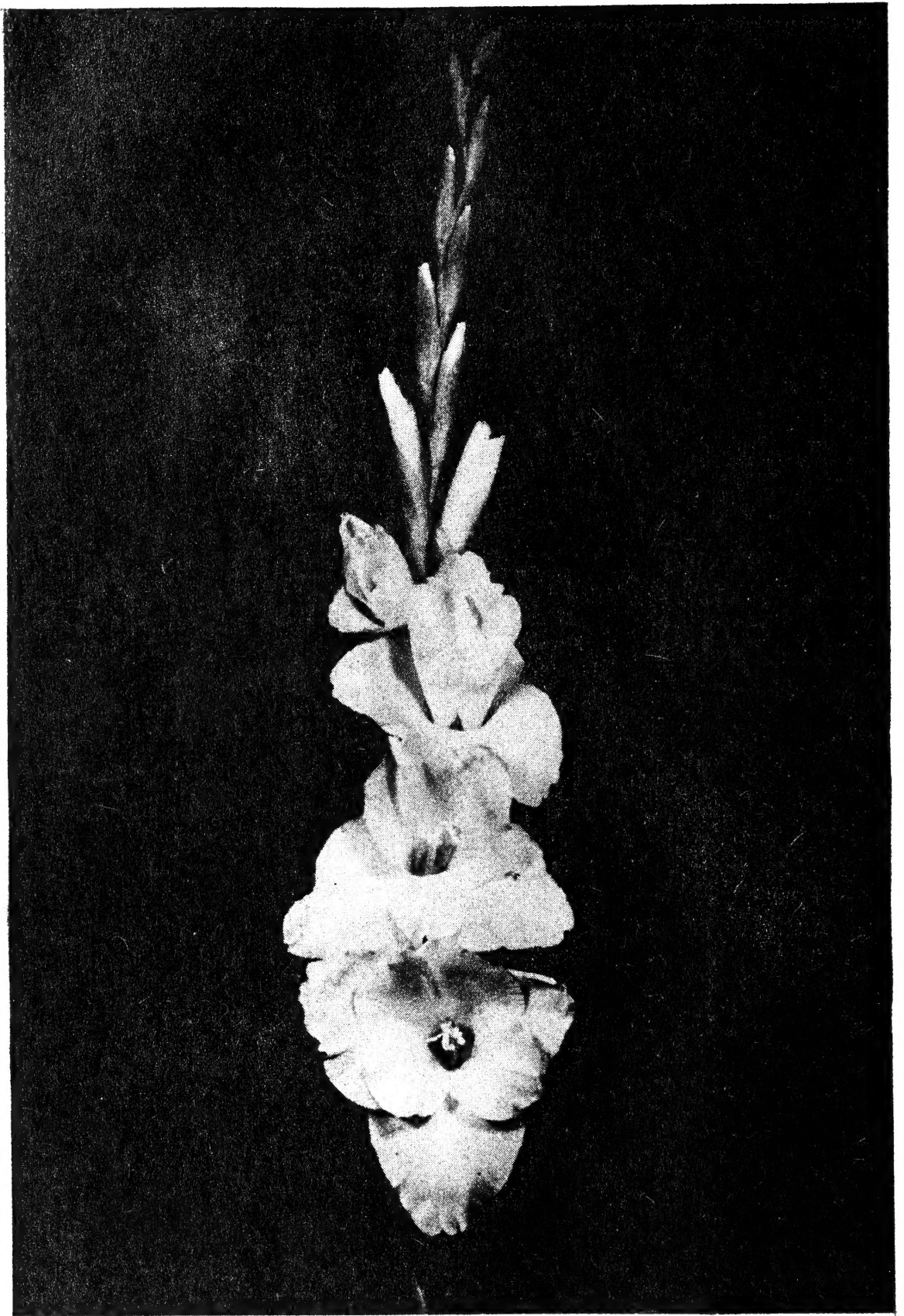


Bengasi

*from no. 4 size bulb*

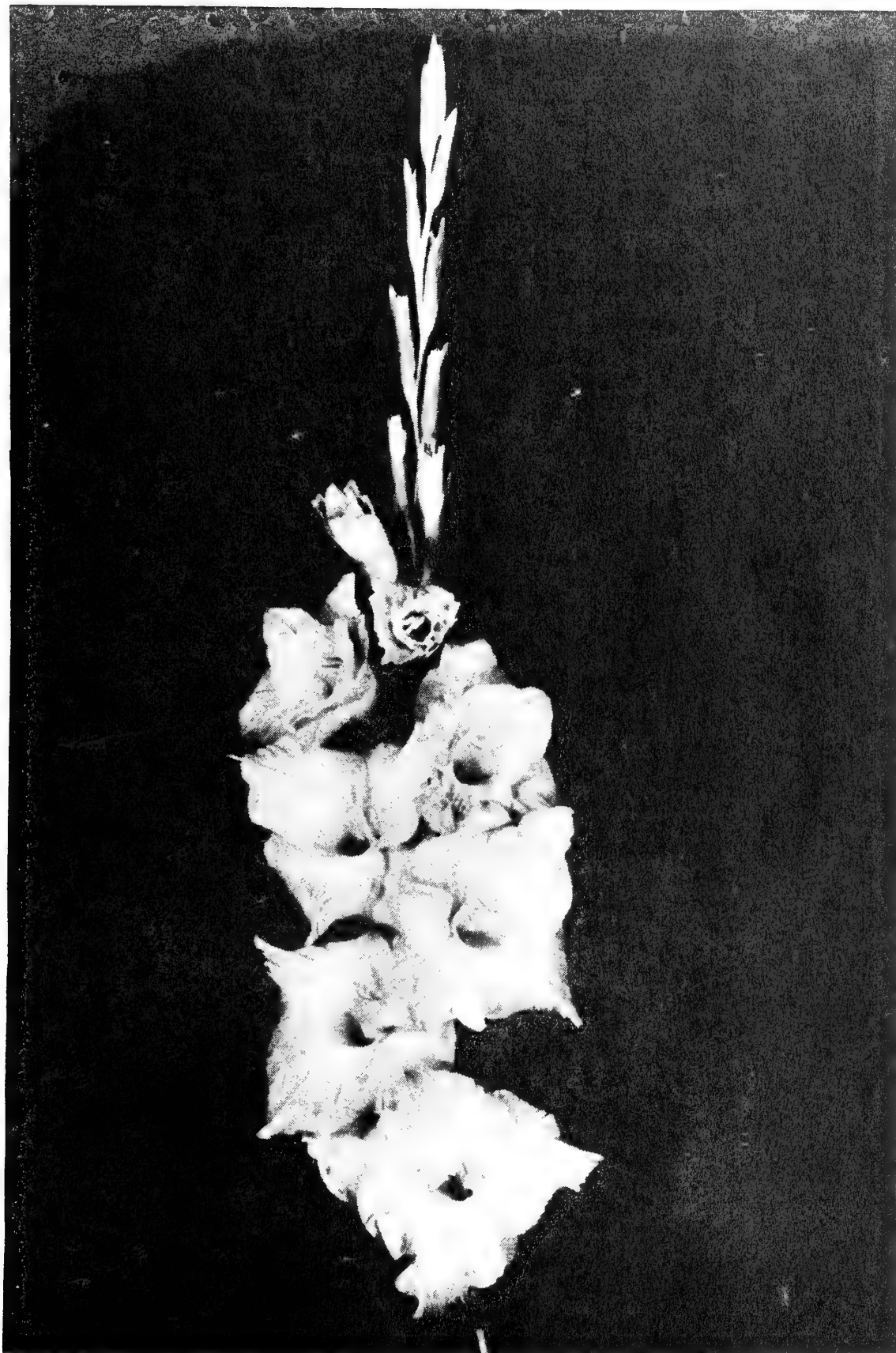


	Per	Large	Medium	Small	Bulblets Per	
<b>BLUE BEAUTY (Pfitzer) Midseason</b>	3	.25	.15		50	.25
Medium blue shading darker toward the edges. It has large wide open blooms but usually doesn't grow very tall. Usually at its best when given plenty of water and good cultivation. Stock is always scarce as it is a slow propagator.	10	.80	.45			
<b>BURMA (Palmer) Midseason</b>	1	.50	.35	.20	10	.50
A very deep rose with wide open heavily ruffled, beautifully placed blooms. Makes a straight spike and after the first floret opens practically every bud will show color. It is a fine exhibition variety and is fast becoming a popular commercial as there is nothing else like it.						
<b>CORONA (Palmer) Early Midseason</b>	2	.25	4-.25	8-.25	100	.35
A large creamy white with a distinct rose picotee edge. It produces tall, straight spikes and opens 7 to 8 large blooms on a flower head of 18 buds. It is a tremendous propagator and fine bulb maker. Corona is a strong husky grower and a favorite with florists.	10	1.00	.50	.30		
<b>CRINKLECREAM (Ellis) Midseason</b>	1	.50	.35	.25	10	.50
Medium yellow with large, beautifully placed florets. Opens 4 or 5 with good attachment and placement on a tall, strong stem. Makes a strong, healthy plant. Crinklecream's distinctive rich yellow color and the stylish appearance of its florets together with good propagation qualities make it a fine commercial.	10	4.00	2.80	2.00	100	4.00
<b>ELIZABETH THE QUEEN (White) Midseason</b>	1	.25	2-.25	4-.25	10	.20
A fine exhibition lavender. It is a little darker than Minuet with large, beautifully ruffled wide open blooms. A certain percentage of the plants grow short so it should be given large quantities of water with ample cultivation. It is a very beautiful and distinctive variety.	10	2.00	1.00	.50	100	1.60
<b>ETHEL CAVE-COLE (Cave) Early</b>	3	.25	5-.25	8-.25	100	.30
One of the top commercial pinks. It will open 8 large light pink florets on a very tall straight stem. It flecks some in hot weather but the flecking doesn't spoil its beauty. It will produce good spikes from No. 5 bulbs. A very heavy increaser and will grow easily from bulblets.	10	.80	.50	.30		
<b>GLAMIS (Palmer) Midseason</b>	1	.20	2-.25	4-.25	10	.20
Clear salmon rose with a cream lip. A rarely beautiful glad due to its fine color and unusual form. It opens 6 large, wide open, ruffled, needlepoint blooms on a plant 4½ to 5 feet tall. The spikes are always straight. For us this variety was fine this past season, being in constant demand by the florists.	10	1.60	1.00	.50	100	1.50
<b>GOLDEN STATE (Wheeler) Midseason</b>	1	.75	.50	.35	10	.75
Clear rich medium yellow with a pink feather in the throat. It opens a double row of 8 to 10 large blooms on a long flower head. The plant grows tall and sturdy. The best way to describe Golden State is to say that it is a well grown Picardy in a clear yellow color. It is a good dependable grower and although a little high in price makes a fine medium yellow cut-flower. Propagates well.	10	6.00	4.00	2.80	100	6.00



Crinklecream

*from no. 2 size bulb*



Glamis

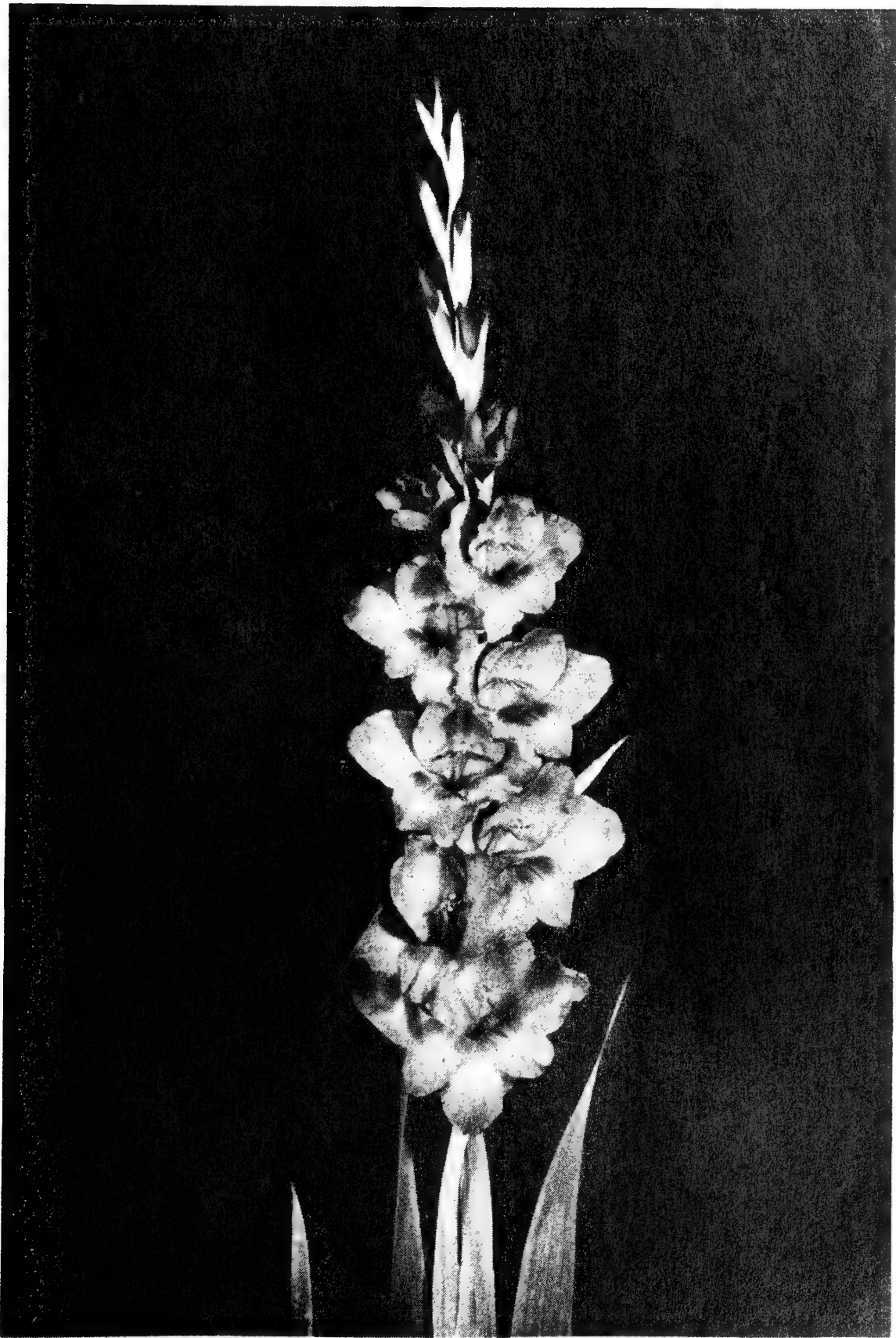
*from no. 2 size bulb*

	Per	Large	Medium	Small	Bulblets	
	2	.25	4-.25	8-.25	Per	.40
<b>JEANIE (Pruitt) Midseason</b> A beautiful salmon pink with a creamy throat blotch. It will open 5 to 6 nicely placed and well attached florets. The plant is tall growing with a willowy stem. Jeanie makes a delightful blend of color.	10	1.00	.50	.30		
<b>KING LEAR (Palmer) Early</b> Deep purple with a silver line on edge of all petals. The florets are large, deep, and heavily ruffled. It will open 6 to 7 on a tall willowy stem. Although a dark color it is well liked as a cut-flower.	3 10	.25 .80	5-.25 .50	10-.25 .25	100	.30
<b>KING WILLIAM (Schenetsky) Midseason</b> Salmon and apricot blending to a clear cream throat. It is a Picardy sport, lighter in color than that variety. Makes a beautiful color combination. It opens 5 to 6 5½-inch florets on a tall straight spike. Has a long record of winnings at the shows, often picked as the most beautiful spike. It is a fine dependable variety and being such a nice color is in demand as a cut-flower.	3 10	.30 .80	5-.30 .50	10-.30	100	.30
<b>LADY JANE (Lake) Midseason</b> A clear cream with a yellow lip which gives it the appearance of being a light yellow. It is an easy grower and a 100% cutter. It will open 7 large ruffled blooms of fine texture on a spike that is always straight. Lady Jane is a fine commercial, opening well when cut in tight bud.	2 10	.25 1.00	3-.25 .60	5-.25 .40	100	.40
<b>LANTANA (Palmer) Early</b> One of the most beautiful colors of all pastel glads, orange, shading through orange-salmon to a golden throat. Florets are waved, needlepoint effect, and are tightly attached to the stem. It will open 7 to 8 well placed blooms on a straight spike of medium height. The jumbo bulblets are produced in quantity and are easy germinators. This past season we cut fine spikes from bulblets.	1 10	.20 1.60	.15 1.20	3-.25 .65	10 100	.20 1.60
<b>LEADING LADY (Johnston) Midseason</b> Creamy white with a lemon yellow throat. Being a sport of Picardy the spike, flower, and growing habits are identical to its parent. To date it hasn't shown any of the disease common to Picardy. The color is crystal clear with the petals of the florets a rich satiny white. The bulblets are produced freely and a large percentage of them make blooming size bulbs the first year. Leading Lady is a top-notch commercial and, opening well when cut in tight bud, will be in big demand by the Florida growers. This year, as last, the stock available will not meet the demand.	1 10	.40 3.20	.25 2.00	.15 1.20	10 100	.40 3.20
<b>MAD OF ORLEANS (Pfitzer) Early</b> <b>Midseason</b> The standard white for a number of years. Milk white with a creamy throat. Will open 7 to 8 large well placed blooms on a tall, straight spike. It is a strong grower and makes a dependable commercial white.	3 10	.25 .75	5-.25 .45		100	.30

	Per	Large	Medium	Small	Per	Bulblets
<b>MARGARET BEATON (Twomey) Early</b>	3	.25	5-.25	10-.25	100	.30
<b>Midseason</b>	10	.80	.50			
A pure solid white with a small orange scarlet throat blotch. It will open 6 to 8 well placed blooms on a long flower head. Plants are tall and graceful and it is widely grown as a commercial cut-flower.						
<b>MARGUERITE (Pommert) Midseason</b>	1	.15	.10	3-.15	25	.20
<b>Midseason</b>	10	1.20	.80	.40	100	.60
A very attractive pink with a golden throat. It opens 5 to 6 very large blooms on a long, heavy spike. The plant is very vigorous. Throughout the mid-west it has been grown mostly as an exhibition variety but this past season the demand as a cut-flower was strong.						
<b>MISS WISCONSIN (Kreuger) Late</b>	1	.80	.60	.40	10	.80
<b>Midseason</b>	10	6.40	4.80	3.20	100	6.40
A beautiful rose pink that is outstanding. It opens 6 to 8 5-inch florets on an always straight spike. It is not a heavy propagator and makes its bulblets late in the season. Commercial growers having a stock of Miss Wisconsin are not anxious to sell as it will be in tremendous demand by florists. This variety was one of the most sought-after cut-flowers grown by us this season.						
<b>OGARITA (Willson) Midseason</b>	1	.15	.10	.05	25	.35
<b>Midseason</b>	10	1.20	.80	.40	100	1.10
Rose salmon shading to a golden throat. It is one of the tallest growing varieties, the plants standing 72 inches from large bulbs. Even small bulbs will produce No. 1 spikes, the growth being so vigorous. It opens 8 large florets on a spike with flower heads reaching 36 to 40 inches. It is a healthy grower with dark green foliage and made a fine commercial this year.						
<b>OREGON GOLD (Majeski) Late Midseason</b>	1	.20	2-.25	4-.25	10	.20
<b>Midseason</b>	10	1.60	1.00	.50	100	1.60
A large light yellow with a deeper throat. Its fine keeping qualities, ability to open many florets, and tall straight spikes make Oregon Gold one of the very best yellow cut-flowers. It also opens well when cut in bud. The plant is very tall and vigorous with the beautifully ruffled florets well placed on long flower heads. Produces quantities of bulblets which, in our planting, germinated easily.						
<b>ORIENTAL PEARL (CARLSON-PUERNER)</b>	1	5.00	4.00	3.00	10	5.00
<b>Midseason</b>	10	40.00	32.00	24.00		
A rich cream with very large wide-open plain petaled florets. The florets will easily measure 6 to 6½ inches and are well placed on an 18 to 20 bud spike of 30 inches. It will open 4 to 6 and will bloom from small bulbs. At this writing (Sept. 7, 1946) our bulblet planting is showing spikes of 12 to 14 buds. Oriental Pearl was introduced as an excellent variety for the cut-flower grower and the show fan. It is reported that a west coast grower is anxious to purchase all the stock available. Florida growers say Oriental Pearl grows fine and large for them.						



Leading Lady  
*from medium size bulbs*



Red Charm  
*from no. 4 size bulb*

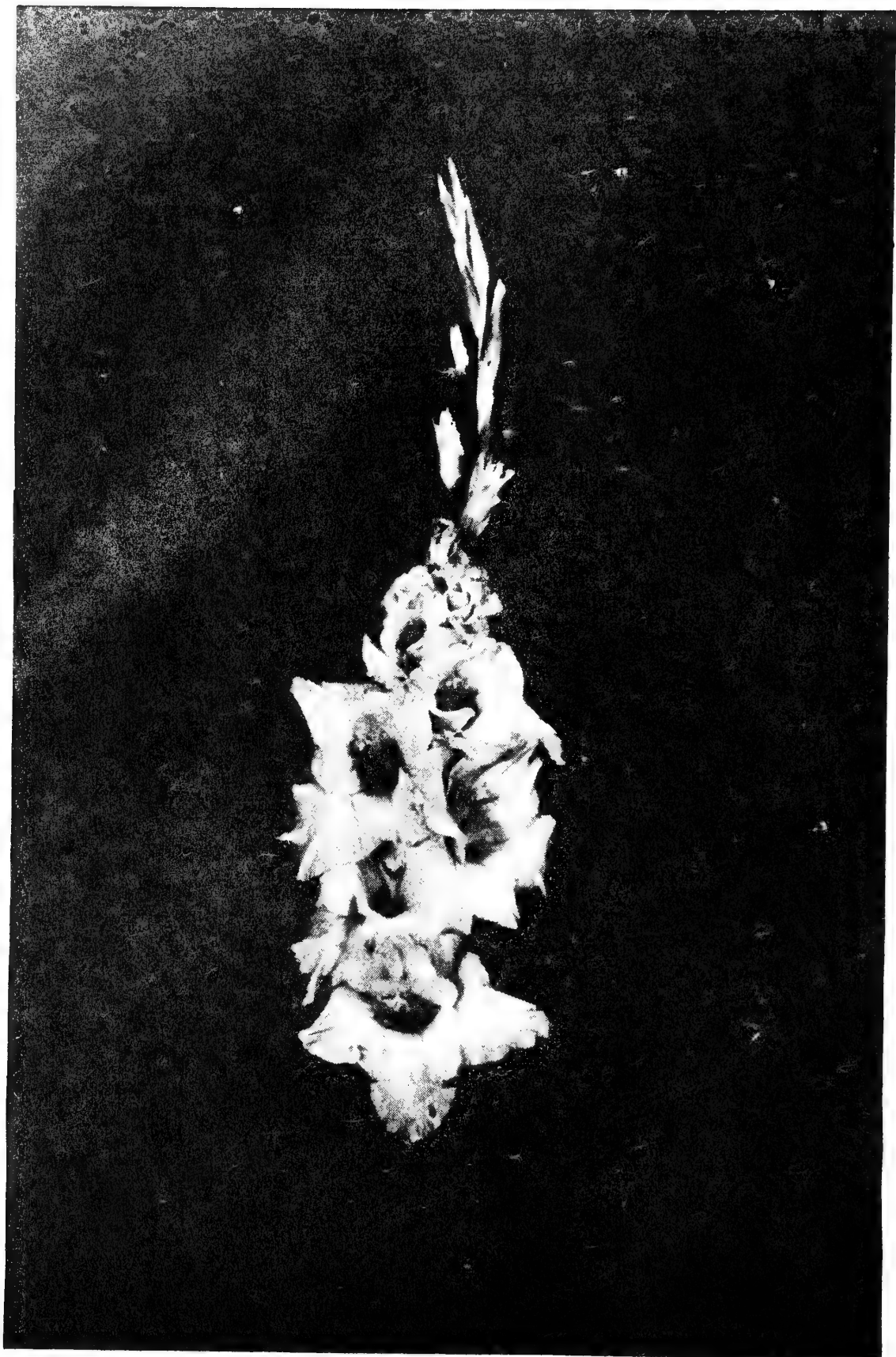
	Per	Large	Medium	Small	Bulblets	
	3	.25	5-.25	10-.25	Per	
<b>PICARDY (Palmer) Midseason</b>	10	.70	.40		100	.30
Salmon pink with slightly darker throat featherings. One of the greatest varieties ever introduced and has made the gladiolus the florist's leading out-door flower. Opens 6 to 8 large well placed blooms on a tall, straight spike.						
<b>RED CHARM (Butt) Early Midseason</b>	1	.15	2-.20	3-.25	10	.15
Deep sparkling scarlet shading toward a deeper throat. It opens 8 to 10 large well placed blooms on a tall, straight stem. It is considered one of the very best medium reds and because of its excellent and consistent performance is an outstanding variety both for the exhibitor and the commercial cut-flower producer.	10	1.20	.80	.65	100	1.25
<b>ROSA VAN LIMA (Pfitzer) Early Midseason</b>	3	.25	5-.25	10-.25	100	.25
Light rose pink with lighter midribs and throat. It will open 6 large florets on a tall spike that is always straight. Being early, it is widely grown commercially.	10	.75	.50	.25		
<b>SILVER WINGS (Ritsema) Midseason</b>	1	3.00	2.00	1.00	10	2.50
A white sport of Picardy that is whiter than Leading Lady. The 6 inch glistening white florets are very ruffled and will open 7 to 8 with most of the remaining buds in color. The strong healthy plants produce straight spikes of 18 to 20 buds and everyone will open to the very tip. It is a fine commercial and is at the head of the list in the white class. Our planting of bulblets this season bloomed freely.	10	24.00	16.00	8.00	100	20.00
<b>SPOTLIGHT (Palmer) Early Midseason</b>	1	1.50	1.00	.60	10	1.50
One of the finest glads grown today. It is a clean medium yellow with a small red throat blotch. Florets are of large size and perfectly placed on a spike which is always straight and tall. Even plants from No. 4 bulbs will grow to a height of 60 inches or more. It will open 7 and is a very good keeper. It also opens well from tight cut bud. Spotlight is the best yellow on the market today and many commercial cut-flower growers are withdrawing their stock from sale. Fine No. 1 spikes were grown by us this season from No. 5 bulbs. At no time could we supply enough cut-flowers of Spotlight. Some florists say it is the best cut-flower they ever handled. It is a very heavy producer of easily germinating bulblets.	10	12.00	8.00	4.80	100	12.00
<b>STOPLIGHT (Lins) Midseason</b>	1	.15	.10	3-.15	10	.15
A top notch commercial. Brilliant clear florist red. It will open 7 ruffled florets which are of heavy substance. It produces very large quantities of bulblets which germinate easily and if given enough water the bulblets will produce salable spikes. Stopligh makes fine spikes from any size bulb and never crooks. The blooms are wide open, well placed, and the attachment is excellent.	10	1.20	.80	.40	100	1.20





Silver Wings

*from no. 2 size bulb*



Summer Gal

*from no. 4 size bulb*

	Per	Large	Medium	Small	Bulblets	
	1	5.00	4.00	3.00	Per	
<b>SUMMER GAL (Zimmer) Midseason</b>	10	40.00	32.00	24.00	10	4.00
A beautiful, glowing, geranium pink. It will open 8 6-inch slightly ruffled florets with 5 to 6 buds showing color. The spikes are always straight and the plant grows to a height of 5 feet. It never flecks and the florets do not fade in the hottest sun. It is a good propagator and the bulblets germinate easily. Again this season Summer Gal has been a winner of many prizes. The color is different from any other and it makes a fine florist cut-flower. Commercial growers are buying heavily of Summer Gal as it is by far the best variety in the deep pink class.						
<b>VALERIA (D. S. Pruitt) Early Midseason</b>	2	.20	.15	5-.25	bulblets	
10	.80	.60	.40	not for sale		
A soft light red in great demand for the florist trade. The plant is of very strong growth, making a heavy stem and spike. It will open 5 to 7 lightly ruffled blooms well placed and of fine texture. Valeria is in tremendous demand and stock always seems hard to locate. Some growers report bulblets are hard to germinate which probably accounts for its scarcity although for us it was an easy germinator this season. Florida growers can use probably all the Valeria grown in the country as it opens well in water and is a strong, healthy grower. Fully 50% of the bulblets planted by us bloomed this season.						
<b>VANGOLD (Van Voorhis) Early</b>	1	.75	.50	.35	10	.75
10	6.00	4.00	2.80	100	6.00	
Clean deep golden yellow. Opens 6 to 8 5-inch plain petaled florets on a medium height plant. Being early and such a fine clear color it is in demand as a cut-flower. It produces bulblets in quantity and because of its dependable growing habits makes a fine commercial yellow.						
<b>VARIATION (Kreuger) Early</b>	1	.20	.15	.10	10	.20
10	1.60	1.20	.80	100	1.60	
A clear pink with a faint lavender cast. With 7 to 10 open, the spikes are a ribbon of color. It is a 100% cutter and because of its reliable performance and extra heavy production of bulblets is fast becoming a fine commercial. It is a favorite with florists and we were unable to supply the demand this past season.						
<b>VEECREAM (Van Voorhis) Midseason</b>	2	.25	---	---	100	.40
10	1.00					
A rich cream with a small scarlet throat blotch. The heavily ruffled florets are well placed and attached and with seven open it makes a very distinctive spike. This variety was very popular with the florists this past season. It is a heavy propagator and makes a fine commercial for local cut-flower sales.						
<b>WANDA (Snyder) Midseason</b>	3	.25	.15	10-.30	25	.15
10	.75	.45			100	.45
Another cream sport of Picardy and a good commercial. It is a pure cream, deeper on the lower petal, with a bit of rose deep in the throat. Growing habits are the same as Picardy. Will produce nice blooms from small bulbs.						

### WHITE GOLD (Scheer) Early

This very early-blooming cream is now so well known that its fame is world wide. It is about the earliest glad to bloom and practically every spike is No. 1. Under ordinary culture the florets are 6 inches and over on strong, straight spikes. Although large it is graceful and beautiful. The plant is strong and vigorous, with very broad, healthy foliage. It is a rapid producer of large bulblets with germinate almost 100% and a large percentage make blooming size bulbs the first year. This season we cut fine spikes from bulblets.

				Bulblets	
Per	Large	Medium	Small	Per	
1	.20	.15	3-.25	10	.20
10	1.60	1.20	.65	100	1.60



White Gold

## Cultural Hints

Packages of bulbs must be opened as soon as received and the bulbs stored in a cool, dry place until planting time.

**PLANTING DATES.** Any time from early Spring until the first of July. The blooming season can be prolonged until frost if planted at intervals of every three weeks.

**WHERE TO PLANT.** Glads should be planted in open, sunny places, away from buildings and trees. They are primarily cut flowers and should be planted in rows such as a vegetable garden.

**SOIL.** Glads will grow in any kind of soil but do best in a sandy loam. The soil must be well drained. It pays to spade deeply.

**FERTILIZING.** The amount to use will depend upon the fertility of your soil. Any good commercial fertilizer will give good results or you can ask your dealer for the fertilizer commonly used on potatoes in your locality. Most growers prefer to place the fertilizer in the bottom of the trench as the bulbs are planted. Care must be taken to see that the fertilizer is mixed with the soil and then about 2 inches of soil placed over the mixture. The bulbs should then be set in the row, leaving the 2 inches of soil between them and the fertilizer.

**PLANTING.** Plant from 3 to 6 inches deep. Small bulbs should be planted about 3 inches deep and larger sizes up to 6 inches deep. If you have a heavy clay soil 4 to 5 inches will be deep enough. The bulbs should be set not closer than 4 inches apart in the rows and the soil must be firmed well after planting.

**WATERING.** Glads need plenty of moisture. To produce top bloom they should have 1 to 1½ inches of water per week. Whenever the natural rainfall fails to supply this quantity be sure to put it on in the form of irrigation. It is best to water just once or twice a week, soaking the soil well, so that the roots are not pushing upward to the surface of the ground.

**CUTTING BLOOMS.** Glads are the most popular cut flower grown today. To enjoy them at their best the spikes should be cut when the first floret is in full bloom. They should be placed in water at once and taken indoors to develop slowly. You can enjoy a spike a long time as a good variety will open every bud to the tip, in water. If the water in the vase is changed daily and about an inch of the stem is cut off (slantwise) each day, many varieties will keep for as long as a week. When cutting the spike always leave 4 leaves on the plant to develop the bulb for next year.

**DIGGING.** Bulbs should not be dug until about 8 weeks after blooming. This is in order to mature the bulbs. A good sign is to watch the foliage and when it begins to turn brown, dig at once. After the tops are cut off, close to the bulb, dry the bulbs in the air in trays or boxes. It is best not to allow the sun to shine directly on them while drying. After 2 or 3 weeks of drying the old bulb and roots can then be removed. DO NOT remove the husks as this protects the bulb during storage.

**STORAGE.** After drying, the bulbs should be stored in screen bottom trays or boxes in the coolest place available. They must not be exposed to freezing temperatures. The ideal storage temperature is 38 to 45 degrees. Bulbs should not be placed too deeply in the boxes as they need air while in storage.

Glads are easy to grow and anyone, even a beginner, can grow the finest show flowers!

## Formulas for Dips and Sprays

### **Lysol Dip**

4 tablespoons of Lysol  
3 gallons of water

or

1 pint of Lysol  
25 gallons of water

Soak bulbs in the Lysol solution for at least 3 hours and no longer than 6 hours; soak bulblets overnight or 12 to 14 hours. After bulbs or bulblets are removed from the solution, allow to drain for 30 minutes and plant same day as treated, preferably while still wet.

### **New Improved Ceresan Dip**

1 ounce New Improved Ceresan  
3 teaspoon measures Grasselli Spreader Sticker or 3 teaspoons Dreft

3 gallons water

To get a good preparation easily and quickly, mix the Ceresan and wetting agent together, add a little water at a time, and stir until a uniform mixture is obtained. DO NOT USE THE HANDS WHEN

STIRRING. Soak bulbs in the solution for 15 minutes, stirring several times during treatment; soak bulblets for 30 minutes. After bulbs or bulblets are removed from the solution, allow them to drain for about 30 minutes and plant IMMEDIATELY. A delay in planting can cause injury to the bulbs. If the ground is dry at planting time I suggest the Lysol treatment instead of N.I.C. as dryness can cause a considerable delay in germination or growth besides possible injury to the bulbs.

### **Thrip Spray**

2 ounces Tarter Emetic  
2 ounces brown sugar  
3 gallons water

Mix well and spray weekly after the foliage is in third leaf.

or

1/2 lb. DDT (50%)  
1/2 pint liquid soap (Germicidal)  
25 gallons of water

For small plantings the following DDT spray is reported as giving good results:

1 rounded teaspoonful DDT (50%)  
1/2 teaspoonful Dreft  
1 gallon water

CAUTION: Lysol, New Improved Ceresan, Tarter Emetic, and DDT are poisonous and care should be taken in handling and storing these materials.

## Business Terms

Minimum order \$2.00. All retail orders are prepaid. Wholesale orders f.o.b. New Albany, Indiana. Liberal overcount will be given on all orders. Remittance must be included with an order from the retail list if the amount is less than \$5.00. Larger c.o.d. orders must be accompanied by 25% of the value. It is our intention to send out only healthy bulbs, true to name, and we will gladly refund the purchase price if the bulbs are found unsatisfactory upon receipt. We cannot, however, guarantee results as planting conditions are beyond our control. All stock is offered subject to prior sale. If we are out of the variety ordered we will not, under any condition, substitute without your permission. I will personally see that each and every customer receives full value.

Signed GEO. W. LASCH, President, Lasch Bulb Farm

### **ACKNOWLEDGEMENT OF ORDERS**

Every order is written up as received and an invoice sent as soon as possible after receiving the order. This invoice should be kept for reference as it is the only invoice we send out except the copy which goes with the order. When corresponding about a previous order please give the order number that is listed on the invoice.

### **WHOLESALE ORDERS**

Upon request we will gladly mail our wholesale list to bona fide growers.

### **BULB SIZES**

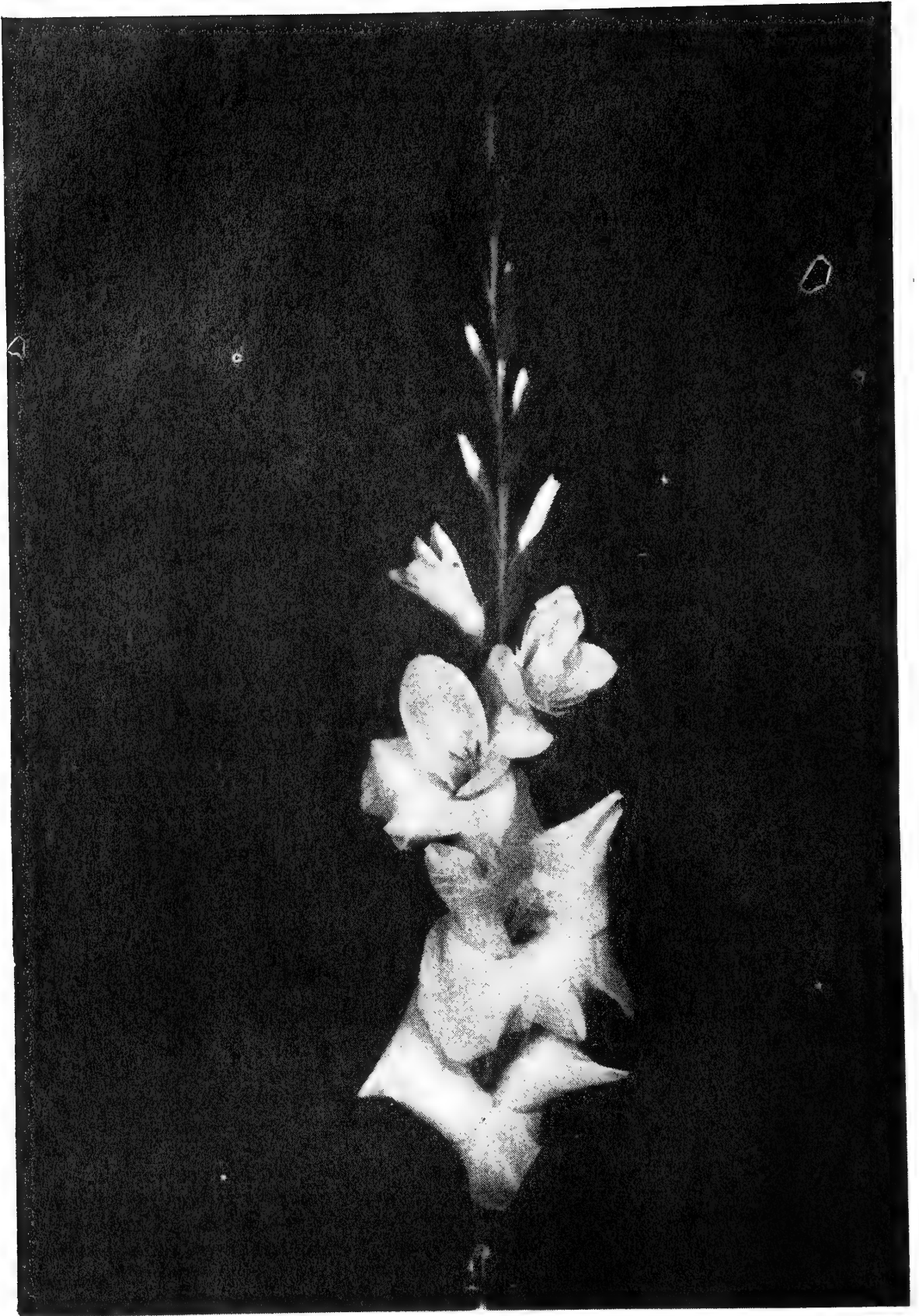
Large size is 1 $\frac{1}{4}$  inch and up, Medium size  $\frac{3}{4}$  inch to 1 $\frac{1}{4}$  inch, Small size  $\frac{1}{4}$  inch to  $\frac{3}{4}$  inch.

### **BULBLETS**

Bulblets of some varieties are hard to germinate. If the bulblets are expensive it will be to advantage to peel them before planting. Do not peel them more than a few days in advance of planting or they will lose moisture and become dry and hard. After planting, whether peeled or not, if they are kept well watered the per cent that will germinate and grow will be much larger. When giving peeled bulblets a pre-planting dip they should only be dipped for an instant, only long enough for the solution to coat them. When growing new introductions, planting bulblets is a cheaper way to get a start; however, we cannot guarantee their germination. Usually a big per cent of most varieties will germinate and grow but it pays to give the bulblets a little extra attention. When bulblets are ordered we will always select the largest ones available.

### **LOCATION**

All mail should be addressed to our office—2210 Elm St., New Albany, Ind. Our bulbs are grown on our farm located on Indiana route No. 562 about 2 miles east of the city.



Oriental Pearl

*from no. 4 size bulb*



No  
Postage Stamp  
Necessary  
If Mailed in the  
United States

Postage  
Will be Paid  
by  
Addressee

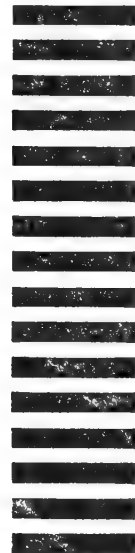
**BUSINESS REPLY ENVELOPE**

FIRST CLASS PERMIT NO. 148, SEC. 510, P.L.&R., New Albany, Ind.

LASCH BULB FARM

2210 Elm Street

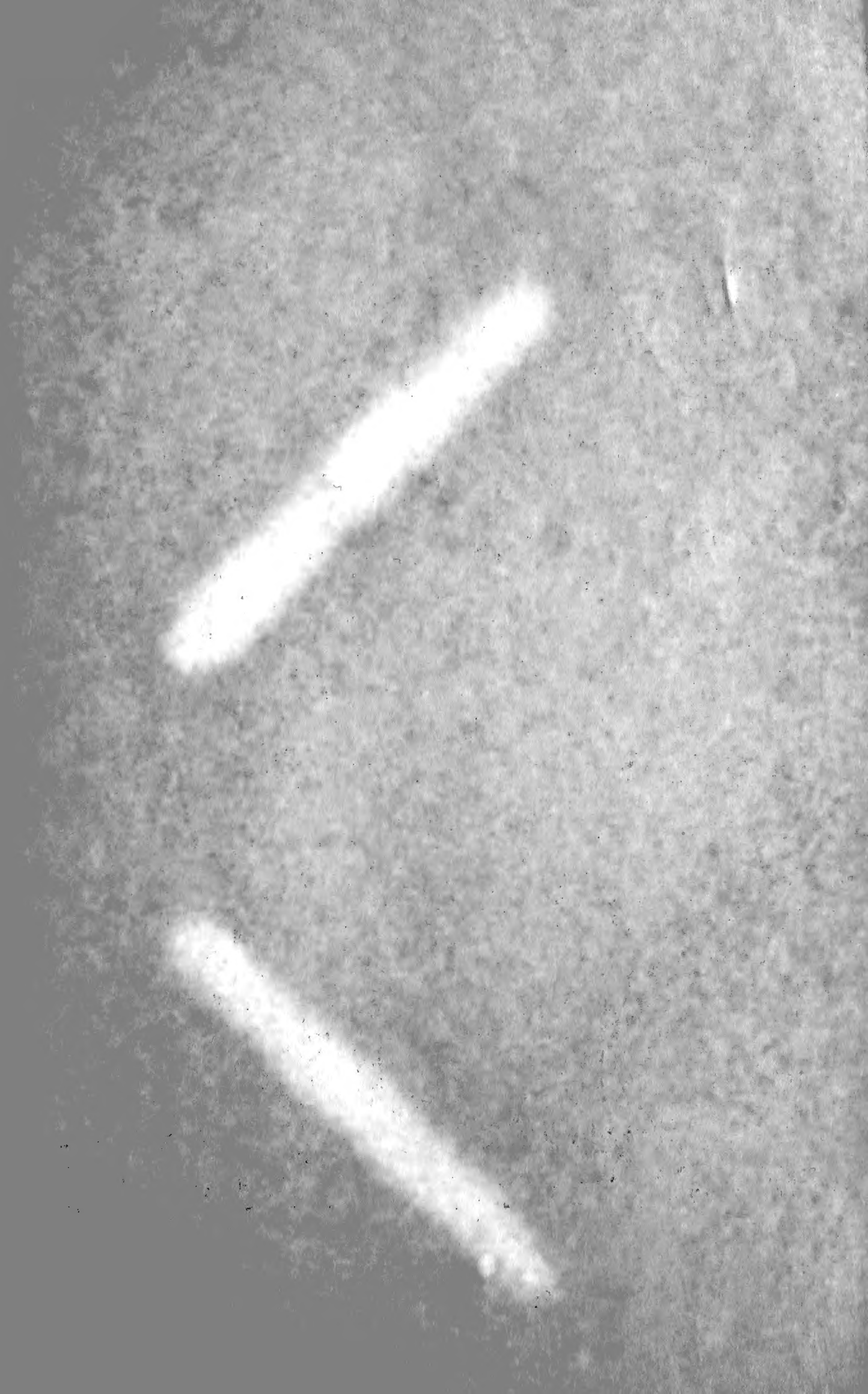
New Albany, Indiana

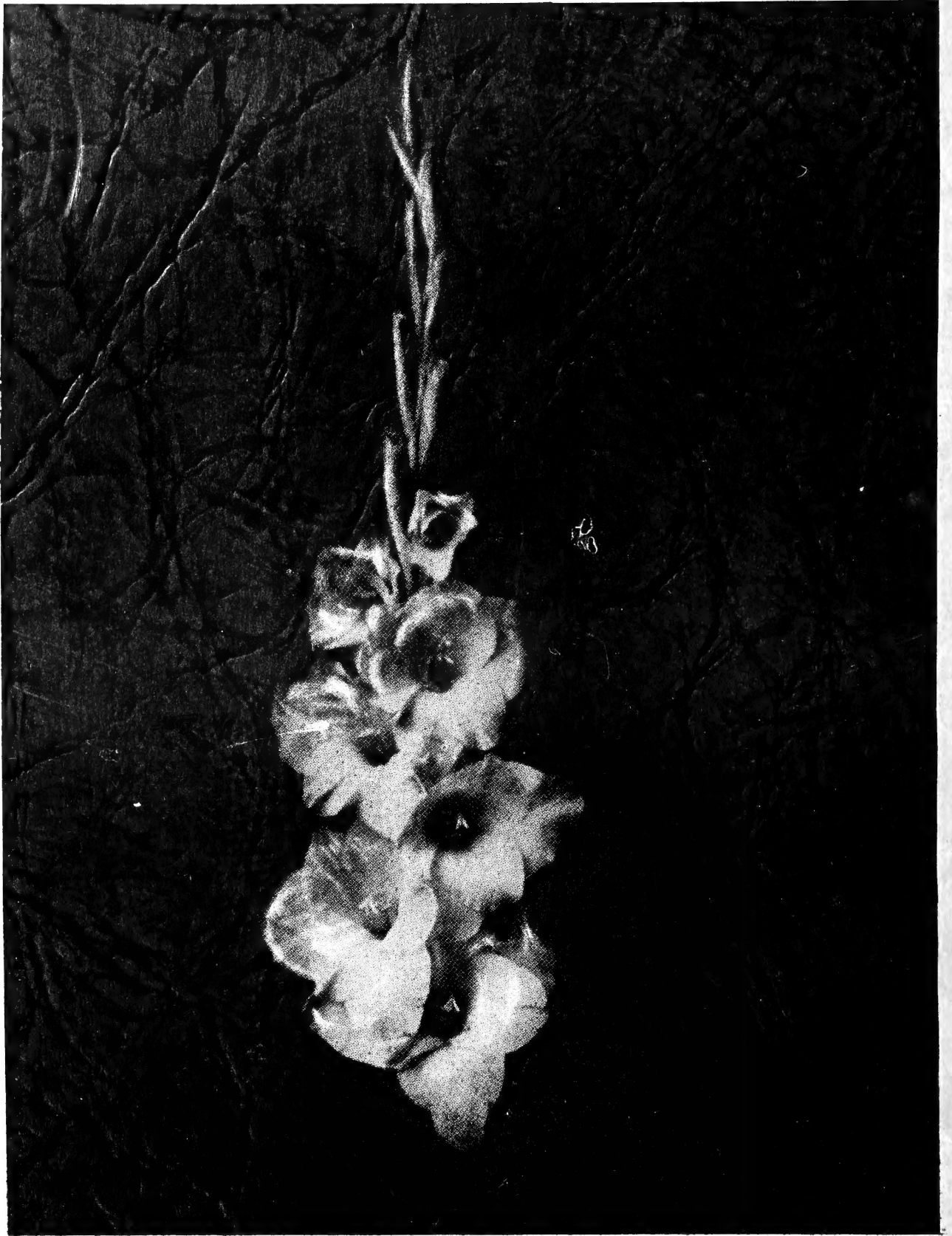












Golden State